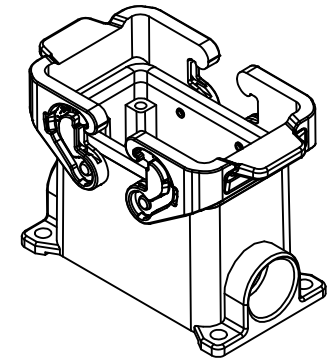
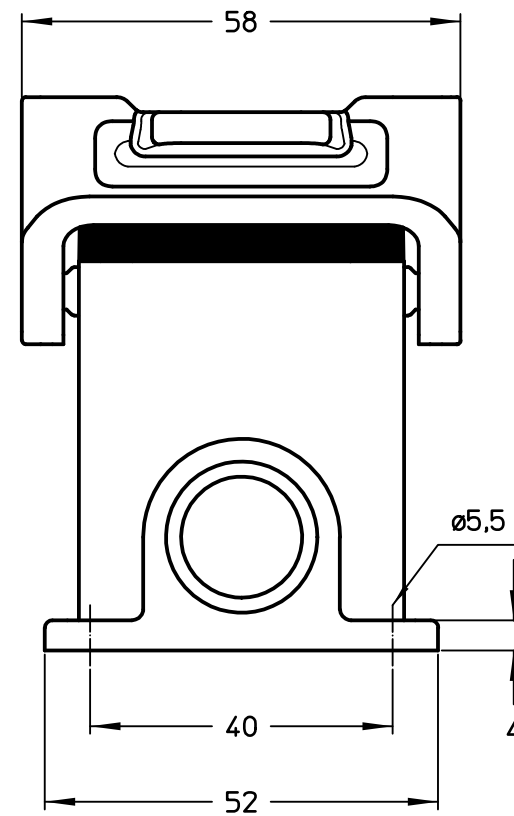
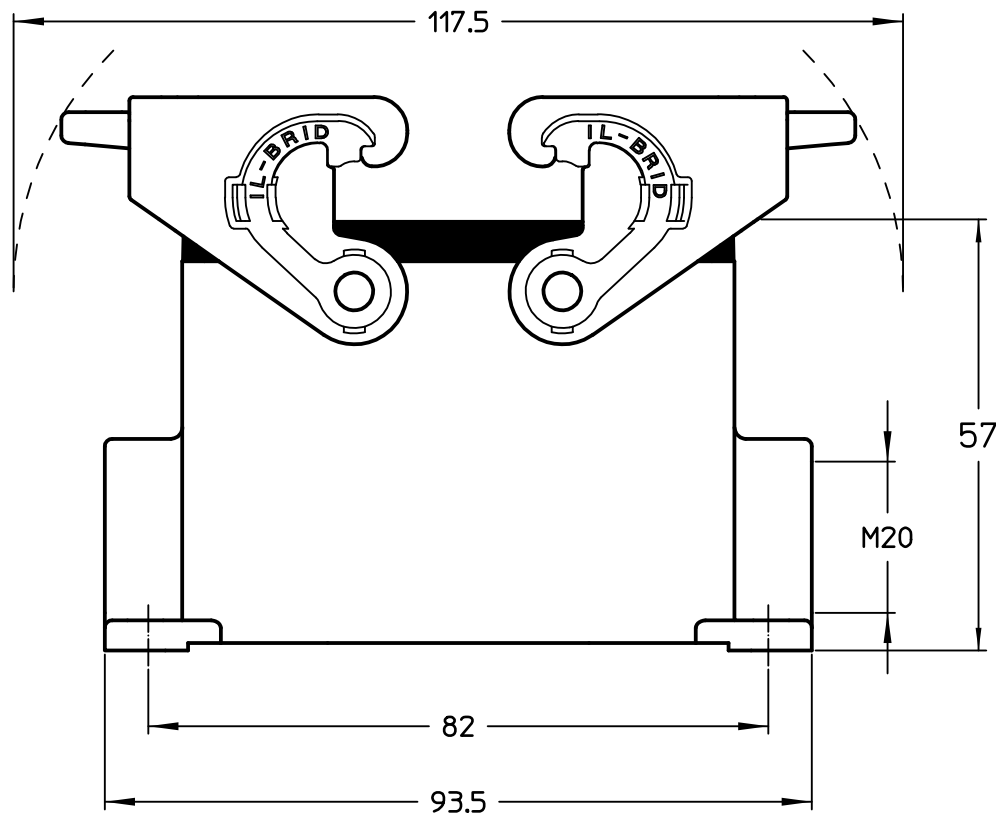


1

2

3



| | |
|------------------|---------------------|
| | Dimensions in mm |
| Original Size A4 | |
| Date 22/02/22 | |
| Sign. G. Renna | |

Simplified representation with dimensions without tolerance

MLP 10.20
surface mounting housing, size "57.27", 1x M20 side entry,
with 2 IL-BRID levers

Scale
1:1



1

2

3